

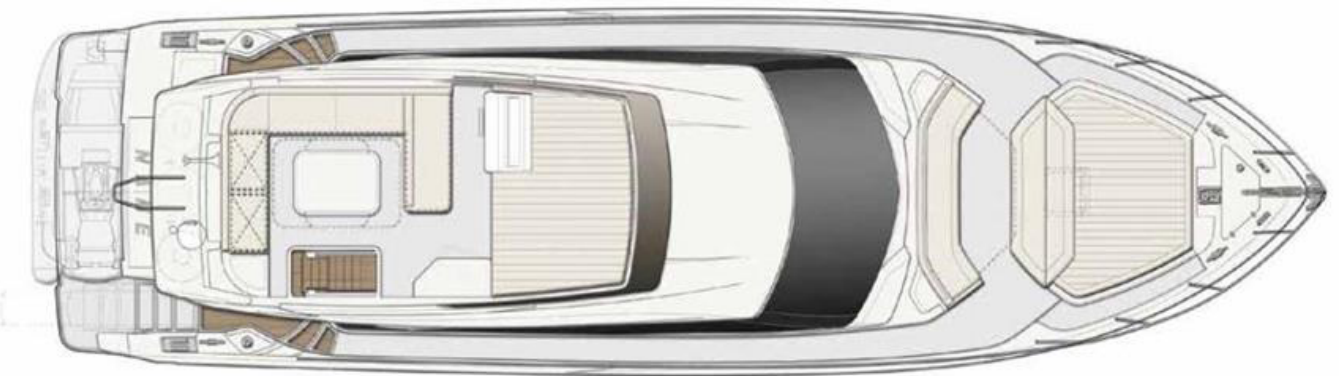
550 - FERRETTI YACHTS

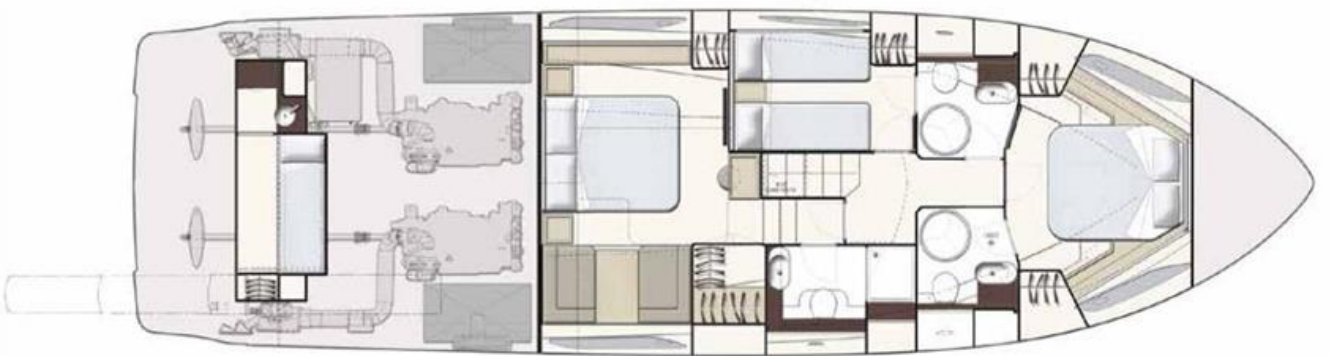
Hull number: 23 - year of built: 2017



MAIN FEATURES

BUILDER	FERRETTI YACHTS	MODEL	550
HULL NUMBER	23	TYPE	Motor Yachts
HULL TYPE	Planing	BOAT NAME	BE ONE
YEAR	2017	ARCHITECT	Studio Zuccon International Project
CONSTRUCTION MATERIAL	Fiberglass - VTR	LOA	17.37 [m] - 56.99 [ft]
BEAM	4.93 [m] - 16.17 [ft]	DRAFT	1.50 [m] - 4.92 [ft]
ENGINES	2x MAN i6 800CR	CRUISING SPEED	28 [kn]
MAX SPEED	32 [kn]	N° GUEST CABIN	3
N° CREW CABIN	1	N. TOILETS	3
DISPLACEMENT	28,800 [kg]	ON DISPLAY AT/IN	Mallorca
COUNTRY	Spain	FLAG	Malta
ASKING PRICE	1,200,000.00 [euro]	VAT STATUS	Not paid





Technical information

Engines hours	375
Trasmissions	V Drive
Propellers	NIBRAL
Main generator	Onan 17.5kW

Fuel tank	3100 litres
Water tank	625 litres
Charge batteries	Yes
Inverter	Yes

Description per area

General description

The Ferretti Yachts 550 combines elegance with a sporty character, enhanced by sophisticated style choices whilst her uninterrupted main deck glazing 'cuts' the yacht's profile, emphasising her dynamic look. M/Y BE ONE offering 3 en-suite cabins, with a full beam master and the most sophisticated expressions of "Made in Italy" quality.

BROKERS COMMENTS: "M/Y BE ONE is the perfect owner-operator Vessel with an abundance of space inside and out, in beautiful condition and ready for the season."

Optional list

- Air conditioning salon + cabins + crew
- Simrad NSS 12" and 9" Evo radar/plotter on flybridge
- N. 2 Radar/plotter Simrad NSS 12" and N.1 9" Evo on the bridge
- Autopilot
- Seakeeper Gyro Stabiliser (2019)
- Radar Antenna Simrad Broadband 4G
- Racor filter for generator
- Smoke separator for generator
- VHF
- Electric bow thruster 10.7 Hp (double propeller)
- Electric stern thruster 8 Hp (double propeller)
- Third fixed control station with cover
- Digital chain counter
- Underwater lights
- Rope walkway lights
- Teak spoiler
- Teak access steps to side walkways
- Teak cockpit
- Stainless steel bimini top on flybridge with LED lighting
- Refrigerator on the fly 42 litres
- Ice maker with independent tank
- Electric winch
- Cabin access ladder night lights
- 5kg washer/dryer
- Openable natural teak cockpit table
- Cooking plate on flybridge
- Cockpit water tap
- Second refrigerator with freezer drawer
- Silververtex exterior cushions
- Cushion with backrest for cockpit benches
- Parquet main deck floor
- Electro-hydraulic retractable gangway
- Electro-hydraulic dinghy lift
- Hi-Fi stereo FM/Cd/Dvd with cockpit and bow speakers
- Sat antenna prearrangement
- 40" TV in saloon with electric lift
- 32" TV in owner's cabin
- Sofa in owner's cabin
- Additional bathroom dedicated to the VIP cabin
- Handles up bathroom stairs
- Bluetooth module for owner's cabin radio
- Quayside water intake
- Waste water system with tank
- Covers for cockpit mooring stations
- Preparation for installation of watermaker
- Crew cabin with toilet and sink

Disclaimer

We offer the details of this vessel in good faith but cannot guarantee or warrant the accuracy of this information nor warrant the condition of the vessel. Pictures of the vessel may be taken from the catalogue. This document does not represent in any case a contractual term.