

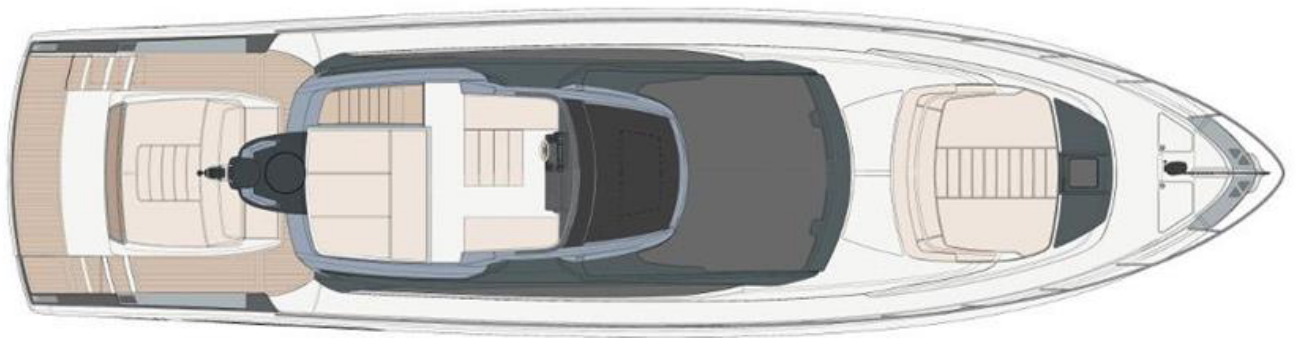
## 66' RIBELLE - RIVA

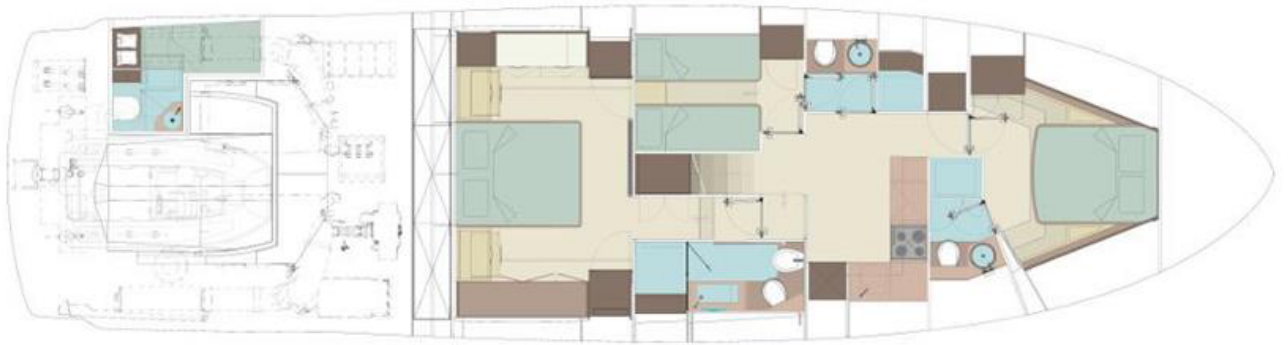
Hull number: 20 - year of built: 2022



### MAIN FEATURES

<b>BUILDER</b>	RIVA	<b>MODEL</b>	66' RIBELLE
<b>HULL NUMBER</b>	20	<b>TYPE</b>	Motor Yachts
<b>HULL TYPE</b>	Planing	<b>BOAT NAME</b>	SEDICI
<b>YEAR</b>	2022	<b>ARCHITECT</b>	Officina Italiana Design
<b>HULL COLOUR</b>	Metallic Shark Grey	<b>INTERNA WOODS</b>	Matt Mahogany Timber
<b>CONSTRUCTION MATERIAL</b>	Fiberglass - VTR	<b>LOA</b>	20.54 [m] - 67.39 [ft]
<b>BEAM</b>	5.29 [m] - 17.36 [ft]	<b>DRAFT</b>	1.80 [m] - 5.91 [ft]
<b>ENGINES</b>	2x MAN V 12 1550	<b>CRUISING SPEED</b>	33 [kn]
<b>MAX SPEED</b>	37 [kn]	<b>N° GUEST CABIN</b>	3
<b>N° CREW CABIN</b>	1	<b>N. TOILETS</b>	3
<b>DISPLACEMENT</b>	46.5 [t]	<b>ON DISPLAY AT/IN</b>	La Napoule
<b>COUNTRY</b>	France	<b>FLAG</b>	Monaco
<b>ASKING PRICE</b>	3,450,000.00 [euro]	<b>VAT STATUS</b>	Paid





## Technical information

---

Engines hours	90
Trasmissions	V Drive
Main generator	Onan 19.0kW
Second generator hours	0
Fuel tank	3800 lt
Water tank	710 lt

---

## Description per area

---

### General description

At first glance the Riva 66 Ribelle is a stunning, beautifully styled, hardtop sports cruiser. But in fact she's rather more than that, as she has a top deck discreetly fashioned into that sleek profile, complete with an upper helm and a big sun lounger. On the foredeck is an even larger lounger, and another on the aft deck, above a garage which is large enough to accommodate a Williams Jet tender.

In the great tradition of Riva, driving the 66 Ribelle is a truly wonderful experience – the waterborne equivalent of getting behind the wheel of a Bentley. That means you can look forward to a superb ride, exemplary handling and effortless performance from the twin 1550hp engines. These give the 66 Ribelle a top speed of 37 knots (42.5mph).

Broker Comments: "SEDICI is like new. A one owner boat and in immaculate turn-key condition, fully serviced with remaining factory warranty."

---

## Optional list

---

### Optional list

Metallic Shark Grey (waterline Bright Black and turquoise)  
Matt Mahogany timber  
Supertropic air-conditioning  
Fibreglass top (bridge area) with electrical opening - metallic version  
Seakeeper NG9  
Upgrade generator Onan 19.0kW (instead of 17.5 kW diff from Std)  
Side underwater lights - white colour  
Cleats on stern platform (2)  
Generator battery charger  
Dinette: Upgrade TV 49" with Apple TV (diff from Std)  
Mater cabin: Upgrade TV 49" with Apple TV (diff from Std)  
Concealed stainless steel electro-hydraulic swimming ladder built into the swimming platform  
Premium sound system - exterior  
Teak deck - grey caulking  
Grey caulking for the teak on the cockpit, pasarelle, aft platform and steps (instead of black caulking)  
Teak on flybridge - grey caulking  
Teak in salon instead of carpet - grey caulking  
Manual sunshade with carbon poles (cockpit)  
Joystick dual station (includes bow thruster with proportional speed control)  
Drawer fridge - dinette  
Dimmer for internal and external lighting  
Antenna radar  
Premium internet package  
Helm station No 1 additional plotter Simrad  
Navionics chart  
VIP cabin TV 32" with Apple TV  
Guest cabin TV 32" with Apple TV  
USB sockets on lower deck  
Tender haulage/launch system with electric winch and central rollers

---

**Tender (model and LOA) and engine (model and power)**  
Tender Williams 345

---

### Disclaimer

We offer the details of this vessel in good faith but cannot guarantee or warrant the accuracy of this information nor warrant the condition of the vessel. Pictures of the vessel may be taken from the catalogue. This document does not represent in any case a contractual term.