

66' RIBELLE - RIVA

Hull number: 20 - year of built: 2022



MAIN FEATURES

BUILDER	RIVA	MODEL	66' RIBELLE
HULL NUMBER	20	TYPE	Motor Yachts
HULL TYPE	Planing	BOAT NAME	SEDICI
YEAR	2022	ARCHITECT	Officina Italiana Design
HULL COLOUR	Metallic Shark Grey	INTERNA WOODS	Matt Mahogany Timber
CONSTRUCTION MATERIAL	Fiberglass - VTR	LOA	20.67 [m] - 67.1 [ft]
BEAM	5.29 [m] - 17.4 [ft]	DRAFT	1.80 [m] - 5.11 [ft]
ENGINES	2x MAN V12 - 1550hp	CRUISING SPEED	33 [kn]
MAX SPEED	37 [kn]	N° GUEST CABIN	3
N° CREW CABIN	1	N. TOILETS	3
DISPLACEMENT	46.5 [t]	ON DISPLAY AT/IN	Palma
COUNTRY	Mallorca	FLAG	Polish
ASKING PRICE	3,350,000.00 [euro]	VAT STATUS	Paid

Technical information

Engines hours	240
Trasmissions	V Drive Shaft
Main generator	Onan 19kW
Generator hours	570
Fuel tank	3800 lt
Water tank	710 lt

Description

At first glance the Riva 66 Ribelle is a stunning, beautifully styled, hardtop sports cruiser. But in fact she's rather more than that, as she has a top deck discreetly fashioned into that sleek profile, complete with an upper helm and a big sun lounger. On the foredeck is an even larger lounger, and another on the aft deck, above a garage which is large enough to accommodate a Williams Jet tender.

In the great tradition of Riva, driving the 66 Ribelle is a truly wonderful experience – the waterborne equivalent of getting behind the wheel of a Bentley. That means you can look forward to a superb ride, exemplary handling and effortless performance from the twin 1550hp engines. These give the 66 Ribelle a top speed of 37 knots (42.5mph).

Broker Comments: "SEDICI is like new. A two owner boat and in immaculate turn-key condition. Certainly worthy of consideration if you are looking for the complete owner/operator or a captained operated Yacht."

LAYOUT:

Accommodation for 6 guests in 3 double cabins all en-suite plus 1 crew cabin.

Master cabin is full beam with a double bed, VIP cabin in the bow with double bed and Guest Cabin with 2 single beds. Equipped galley. Salon with L-shaped sofa, dining table and furniture accommodating TV. Cockpit sofa with table and sunbed above garage storage for tender and sunbed on foredeck.

Specification

EQUIPMENT:

All boat painted Metallic Shark Grey (waterline Bright Black and turquoise)
Interior furniture finished in matt mahogany timber
Zero-speed stabilizer Seakeeper NG9
Teak decks in cockpit, swim platform, fly bridge and sidewalks to bow
Generator Onan 19kW
Generator battery charger
Air conditioning Supertropical throughout
Electric opening in ceiling above interior helm station
Covers for exterior seating, table and sunbeds
Bow thruster
Swim platform up/down system
Dimmer for internal and external lights
Telescopic Hydraulic hideaway gangway
Electro Hydraulic swim ladder
Manual sunshade with carbon poles in cockpit
Covers for exterior seating, table and sunbeds
Cleats on swim platform
Under water lights
Anchor winch 2300W with s.s. anchor 50kg and galvanized chain 100m Ø12mm
Stern mooring winch
Window between saloon and cockpit openable
Teak flooring in saloon main deck
Electric wc with sweet water and with black water tank system (330 l.)
Grey water tank system (330 l.)
Boiler for hot water
Shore power 220v with automatic battery charger
Fire extinguisher system
Shower hot and cold at stern
Life jackets and life raft
Garage for tender storage with hydraulic opening, electric winch and floor supports

NAVIGATION:

SIMRAD Radar antenna
GPS antenna
2 x Displays colour for navigation radar, plotter etc
Autopilot interfaced to plotter/GPS
Radio VHF DSC
Electronic engine controls
Joy stick dual station
Rudder angle indicator
Premium internet package
On-board computer: engines monitoring system, interceptors and rudders position, consumption, water and fuel tank level. Alarms for: bilge, garage door open, swim platform not in position, risers high temp, water in filters

Specification ..continued

AUDIO VISUAL:

Satellite TV Antenna KVH TV6 with decoder

TV flat screen 49" with with Apple TV and electric lifting system in saloon

TV flat screen 49" with Apple TV in main cabin

TV flat screen 32" with Apple TV in Vip and guest cabins

Mini Hi-Fi sound system in saloon and 3 guest cabins all with speakers

Premium sound system speakers exterior

DOMESTIC:

Combined fridge freezer

Ceramic hob

Micro wave oven

Dishwasher

Drawer fridge in saloon

Cutlery, glasses and plates for 6p

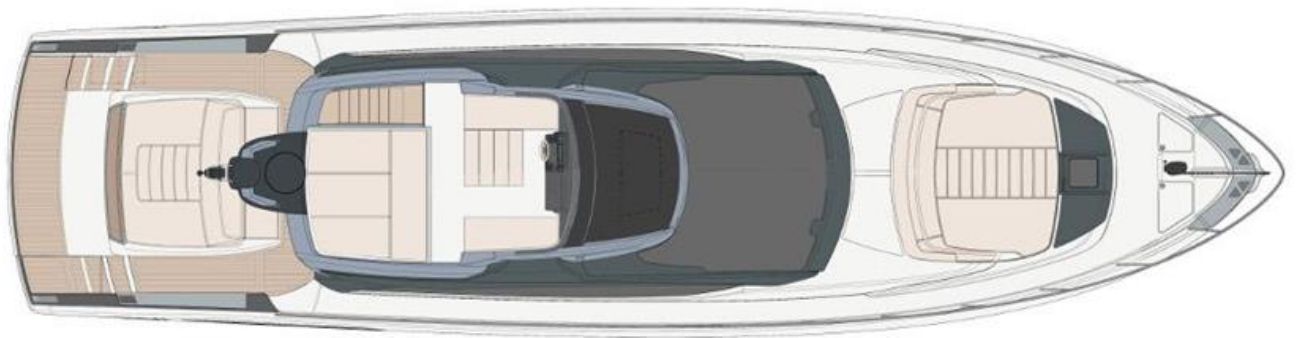
Wet bar in cockpit with BBQ grill and sink

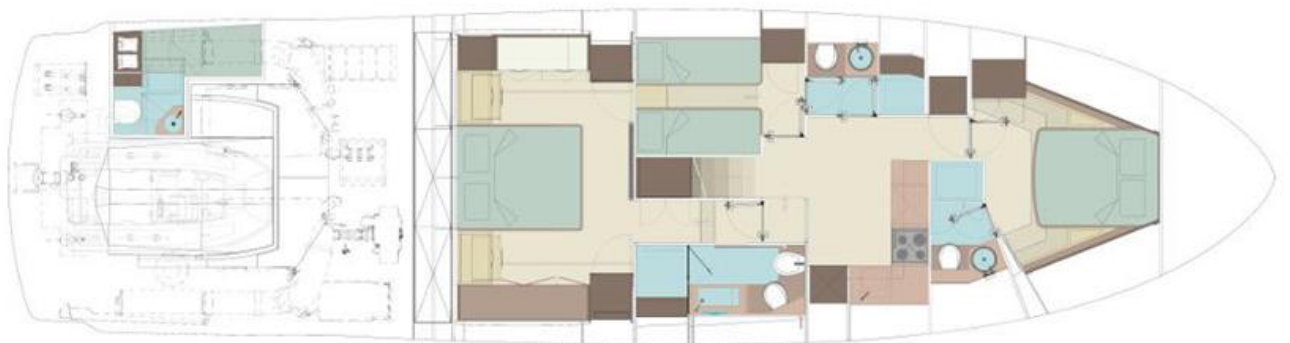
Tender (model and LOA) and engine (model and power)

None

Disclaimer

BROKERS offer the details of this vessel in good faith but cannot guarantee or warrant the accuracy of this information nor warrant the condition of the vessel. Pictures of the vessel may be taken from the catalogue. This document does not represent in any case a contractual term.





Disclaimer

BROKERS offer the details of this vessel in good faith but cannot guarantee or warrant the accuracy of this information nor warrant the condition of the vessel. Pictures of the vessel may be taken from the catalogue. This document does not represent in any case a contractual term.